

TRANSITION ALTITUDE 9000 ft

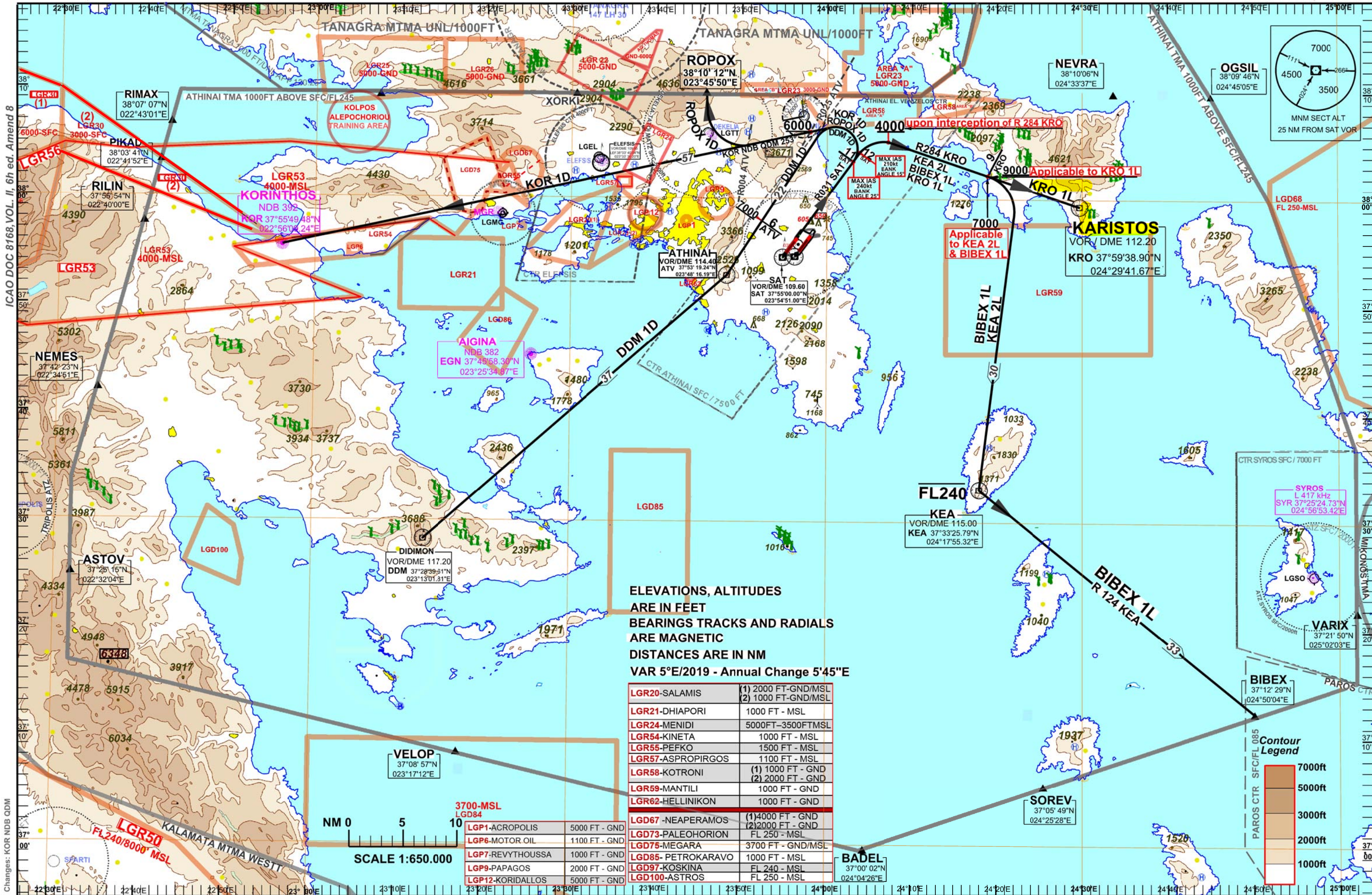
ATIS 136.125

TOWER WEST 136.275
TOWER EAST 118.625

ARRIVAL WEST 119.100
ARRIVAL EAST 126.575

ATHINAI/ELEFTHERIOS VENIZELOS
RWY03L (BASED ON SAT VOR)

BIBEX1L,KEA2L,
KRO1L,KOR1D,ROPOX1D, DDM 1D.



**ATHINAI / “ELEFThERIOS VENIZELOS“
SAT VOR/DME RWY 03L**

SIDs : ROPOX 1D,KOR 1D,DDM 1D,KRO 1L,KEA 2L, BIBEX 1L

GENERAL:

Level restrictions are applied in case of radar failure (RCF), and if not otherwise instructed by ATC, in order to secure vertical separation when flying on these SIDs and on specifically related SIDs from parallel RWY 03R.

DESIGNATOR	DESCRIPTION	MAXIMUM IAS / MINIMUM BANK ANGLE	PROCEDURE DESIGN GRADIENT	LEVEL RESTRICTIONS
ROPOX 1D	Climb on RDL 031 SAT. At 11 DME SAT turn left inbound to KOR. When crossing RDL 004 ATV turn right inbound to ROPOX.	240kt / 25° during initial turn for ATC constraints (to avoid TANAGRA MTMA).	PDG: 5,7% (346ft/NM) is required up to 5200ft due to obstacle 3635ft at a distance of 8,48 NM and on a bearing 335° from the DER of RWY 03L	Cross RDL 025 ATV at 6000ft or above (due to Kotroni ATZ).
KOR 1D	Climb on RDL 031 SAT. At 11 DME SAT turn left (KOR NDB QDM 253) inbound to KOR.	240kt / 25° during initial turn for ATC constraints (to avoid TANAGRA MTMA).	PDG: 5,7% (346ft/NM) is required up to 5200ft due to obstacle 3635ft at a distance of 8,48 NM and on a bearing 335° from the DER of RWY 03L	Cross RDL 025 ATV at 6000ft or above (due to DEKELIA ATZ).
DDM 1D	Climb on RDL 031 SAT. At 11 DME SAT turn left inbound to ATV and then to DDM.	240kt / 25° during initial turn for ATC constraints (to avoid TANAGRA MTMA).	PDG: 5,7% (346ft/NM) is required up to 5200ft due to obstacle 3635ft at a distance of 8,48 NM and on a bearing 335° from the DER of RWY 03L	Cross 6 DME ATV 7000ft or above.
KRO 1L	Climb on RDL 031 SAT. At 12 DME SAT turn right, intercept at 4000ft or above RDL 284 KRO inbound to KRO.	210kt / 15°	PDG: 4% (243ft/NM) is required up to 700ft due to a terrain peak 605ft at a distance of 1,7 NM and on a bearing of 038° from the DER of RWY 03L	Cross 9DME inbound to KRO at 9000ft or above.
KEA 2L	Climb on RDL 031 SAT. At 12 DME SAT turn right, intercept at 4000ft or above RDL 284 KRO inbound to KRO. At 9 DME inbound to KRO turn right to KEA.	210kt / 15°	PDG: 4% (243ft/NM) is required up to 700ft due to a terrain peak 605ft at a distance of 1,7 NM and on a bearing of 038° from the DER of RWY 03L.	Cross 9DME inbound to KRO at 7000ft or above. Cross KEA not above FL240.
BIBEX 1L (This SID should be used for destination PAROS AIRPORT)	Climb on RDL 031 SAT. At 12 DME SAT turn right, intercept at 4000ft or above RDL 284 KRO inbound to KRO. At 9 DME inbound to KRO turn right to KEA. After KEA intercept RDL 124 KEA and proceed to BIBEX.	210kt / 15°	PDG: 4% (243ft/NM) is required up to 700ft due to a terrain peak 605ft at a distance of 1,7 NM and on a bearing of 038° from the DER of RWY 03L	Cross 9DME inbound to KRO at 7000ft or above. Cross KEA not above FL240.